

Friends of Friendship Place

Halloween Bash

Trick or Treat? A traditional Halloween party was held on Monday, October 31st at Friendship Place, hosting over 30 guests. The party officially began at 5pm, but excited members arrived at 2pm to work on their make-up and help with setting up for the party.

Door prizes were awarded throughout the evening, and included gift cards from local businesses, crafts made Jenn S. and Robin P., and several other donated items. Guests participated in eating the Halloween feast, and games such as the mummy wrap (teams wrapping a member up in toilet paper the fastest and most creatively), musical chairs, and a scavenger hunt. The energy level was high during the competitive game of musical chairs. Dan R. provided the music while guests fought for a seat. With much fun, Jenn S. was the declared a true winner!

Everyone was encouraged to dress up for the event, and souvenir pictures were taken for each participant in our prop coffin (spooky). Danielle O. was awarded for best female for her angel costume, and received a donated basket of personal items from Bath and Body Works. Leon J. was awarded the title of best male costume for his roman king costume, and won a donated basket of men's care products from Bath and Body Works (thanks Aunt Jenny!). The overall best costume was awarded to Jenn S., whose very creative costume included all the characters from the Wizard of Oz. She wore a monkey hat, green witch face with nose, straw for the Scarecrow, tail for the Lion, ruby slippers for Dorothy, and a tin-wrapped leg for the Tin Man. Jenn S.'s prize was a \$50 gift certificate from Future Neenah to be used at most Neenah businesses.

When all was eaten, games played, and prizes awarded, everyone received a goody bag filled with candy and a dilly bar coupon (donated by S. Commercial Dairy Queen). All of the participants had great time and are looking forward to next year!

Inside This Issue

New Vehicle	2
Wellness Program	2
2012 Calendars for Sale	2
CIT officers visit	3
Poem	3
Thank you	3



Our New Vehicle Has Arrived!

Thank you to all who were able to make a donation that helped us reach our \$10,000 match grant from J.J. Keller Foundation to purchase our gently used van on October 20, 2011! Also, thank you to Gustman's for their donation and helping us get the perfect vehicle to allow us to provide better transportation assistance for our members.

Our van allows us to safely transport our members to and from events, doctors appointments, job interviews, volunteer and community projects, etc. Also, our members are better able to participate in monthly activities, as they do not have to worry about arranging their own transportation in order to participate in our programs.

With all its bells and whistles, all are excited with the newer vehicle and we hope to keep exploring the new features of our van. There are plenty of buttons to still be pushed...

Healthy Lifestyles Program

Our new healthy lifestyles program started November 1, 2011 with a bang!

Our recent activities included art therapy and yoga. Friendship Place was able to provide an art therapy session to any interested member on November 16th, at no cost to the members. Attendees had the chance to make worry and dream dolls. The purpose of this task was to know you are able to give your worries to your doll, and think about your dreams. All attendees reported that they felt great after this session. Our next art therapy session will be held on December 21st.

Yoga was a new experience for most of our members of Friendship Place. Members were able to take part in a beginners yoga class and had the ability to ask questions as the class took place. Eyes were open to new ways of relaxation.

Members are looking forward to all of the new activities that will be taking place each month. We will soon be utilizing our YMCA membership. Look on our monthly calendar of activities for details, listed as "Healthy Lifestyles."

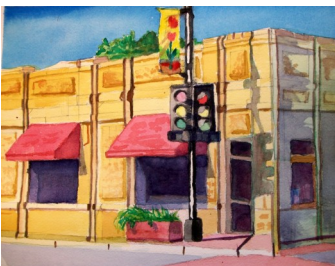
Holiday Party

The holiday season is fast approaching and the Holiday Party will be here before you know it. Friendship Place, NAMI, and Outreach Center's annual holiday party will take place on **Monday, December 12th, 2011 at 5:00pm** at the First Congregational United Church of Christ in Appleton (724 E. South River Street).

This party is free to all consumers, family members, and friends. We will be providing a delicious holiday meal and a small gift for all party attendees.

If you are interested in volunteering for this wonderful event, please contact Jill Mitchler of NAMI at (920) 954-1550 or jill@namifoxvalley.org. We look forward to seeing all of you and wishing you a happy holiday!

2012 Watercolor Calendars For Sale



We are in the process of having our 2012 Friendship Place watercolor calendars printed to be ready for sale and distribution the 2nd week of December. The calendars will feature 12 of our awesome watercolor painters individual watercolors, and information about Friendship Place. This project was made possible from a donation from United Way Fox Cities. Live United!

The calendars will be available to purchase at \$10 per calendar. These would make a great stocking stuffer! All proceeds go toward the popular art program at Friendship Place.

Please help support our art program with the purchase of our calendars. Thank you!

CIT Officers Visit Friendship Place

Hosting five police officers in attendance, at one time, in a single location, could make anyone feel uncomfortable. Having five in a place where most have had an unpleasant experience with them can be overwhelming.

Fortunately, the area police officers were at Friendship Place for a good reason. NAMI's Crisis Intervention Training Class was able to send the officers to Friendship Place to learn how to better interact with the mental health population when a crisis arises. Members were able to discuss their feelings of past experiences with prior police contact. The officers appeared very receptive to the ideas shared.

Members gave helpful feedback to questions the officers raised and both parties walked away having a better understanding of how to approach future encounters.

Having the opportunity to invite these officers into Friendship Place meant a great deal to our members. Several have stated they feel more comfortable around law officials, and members have voiced that they would like to invite other CIT classes, law officials, and influential people to Friendship Place in the future.

The Precedent

Loose lips lock onto flesh.
 Sharp tongues tighten on it.
 There will be weeping and
 Gnashing of teeth.
 We don't think it's right
 To help the poor!
 We'd rather blast off to Mars!!
 Ethereal lawns in the distance.
 Matching the open door with water.
 The barn wasn't that red anymore.
 The lemon thang in the south sky
 Wasn't exactly high.
 It was pig sty!
 You're powerful.
 Powerful smelling!
 -Al B

Thank You! Thank You! Thank You! (October and November donations)

Financial Support: Community Foundation of the Fox Valley Region (Mental Health Fund, Real Estate Fund, Dick and Pat Galloway Fund, Frances A. & Joseph F. Bachman Fund), Clifford Family Memorial Fund, Ruth S., Tom W., James C., Chip C., Appleton Rotary West, Clare Clifford, St. Paul Community Table members, Butitta Family, Tim Galloway, Richard A. Bergstrom, Peter Kelly and United Way of the Fox Cities, JJ Keller Foundation, Inc., Robyn Tonn, Joseph Matern, Glen and Sherry Bojar of Olde Country Style Almonds, Gustman, Don and Jean Fund, John Andersen, Marne Keller-Krikava, Kathleen Kobal, and the Langner Family.

In-Kind Donations: Pagoni's Pizza, Arlene Boardman, Mihm's, Jenny and Bath & Body Works, Aspen Coffee and Tea, Dairy Queen on Commercial, Great Harvest Bread Co.

Time & Talent: Ada Hall, Michael Barnes, Volunteer Project Group, FP Board of Directors, Jeff Zdrade, FP staff members, Leah Schwartz, FVTC Nursing Program students, Oshkosh Nursing Program students, NAMI-FV New Hope facilitators, NAMI-FV, NAMI-CIT Officers, ORC, Ruth from the Lutheran Homes, Maggie Mason, Kathleen Morgan, and the

FVTC OTA students.

Our sincere apologies if we inadvertently left your name out.

We would like to publicly thank the following for their time, talents, and donations in the second and third quarter of 2011. Without all of you, FP couldn't be the place it is!

YES! I want to help Friendship Place with a financial donation.

NAME _____

ADDRESS _____

CITY, STATE, ZIP _____

PHONE _____

Enclosed is my **tax-deductible** contribution of:

\$5.00 \$10.00 \$25.00 \$50.00 \$100.00 Other

We appreciate your helping others gain their independence.

Please make your tax-deductible checks payable to Friendship Place.

FRIENDSHIP PLACE, INC.

220 N. Commercial Street
Neenah, WI 54956

Phone: 920-729-9975
Fax: 920-886-1815
E-mail: friend1@tds.net or friend2@tds.net

Mission Statement:

To encourage adults with mental illnesses to live well by fostering an environment that provides members with peer support, advocacy, and education.

We're on the Web
www.friendshipplaceinc.com

BOARD OF DIRECTORS

President, Jim Travis, Winnebago County Clinical Services
Treasurer, Terry Tessier, First Business Bank
Secretary, Tricia Centner, Winnebago Cty. Clinical Services
Doug Dieterich, Galloway Foods
Malcolm Hjerstedt, Munroe Studios
Dr. Ada Hall, Affinity Medical Group
Connie Kafura, Lakeside Packaging Plus, Inc.
Richard Galloway, Galloway Foods (Retired)
Rachel Kelbert, Winnebago County Clinical Services
Sue Rae Miller, St. Elizabeth Hospital
Howard Fuerst, Neenah Police Department
Chris Sievert, Neenah Police Department
Lynn Erickson, Valley Packaging Industries, Inc.
Kara Patterson, *The Post-Crescent*
Jon Phillip, Winnebago County
Diane Turke, Roberts, Ritschke & Tyczkowski, Ltd.

STAFF MEMBERS

Executive Director: Lori L. Hill
Mental Health Program Coordinator: Katelyn K.
Mental Health Program Assistant: Caitlin B.